

SDA10-4850

Lithium-ion battery system for telecom



shoto

Application Scenarios

- Backup Power Supply For Communication Base Station
- applicable to stable grid, half-grid and other scenes

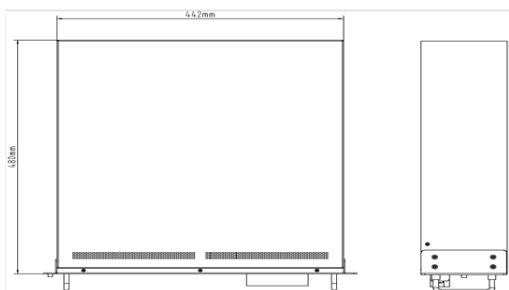
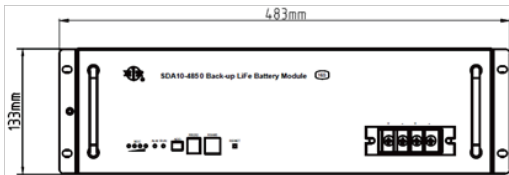
Key advantages

- High energy density: more energy with less weight and footprint
- High charge and discharge currents (short charge period)
- Long battery life (up to 3 times the battery life of a conventional battery)
- High efficiency between charging and discharging
- Higher continual power available
- Wide operating temperature
- Predictable end of life due BMS controller
- Multiple anti-theft solutions (optional): software, gyroscope, material, etc.
- Other functions (optional): Heating/LCD/Dry Contact

Product Certificates

- ISO9001
- ISO14001
- CE
- TLC
- TUV
- IEC62133

Overall dimensions



Technical Parameters

| project | | index | |
|--------------------------------------|-----------|--|-----------------|
| 1. Performance parameter | | | |
| Model | | 15S | 16S |
| Nominal voltage | | 48V | 51.2V |
| Rated capacity | | 50Ah(C ₃ , 0.2C to 40V at 25 °C) | |
| Operating voltage range | | 40V-56.4V | 42V-57.6V |
| Boost charge/Float charge voltage | | 54.5V/52.5V | 57.6V/54V |
| Charging current (current-limiting) | | 10A | 10A |
| Charging current (Maximum) | | 50A | 50A |
| Discharge current (Maximum) | | 50A | 50A |
| Discharge cut-off voltage | | 40V | 40V |
| Dimensions | Width | 442±1mm | 442±1mm |
| | Height | 133±1mm | 133±1mm |
| | Depth | 380±1mm | 380±1mm |
| Weight | | About 24.5±1 kg | About 25.3±1 kg |
| 2. Function Description | | | |
| Installation method | | Rack mounted / Wall mounted | |
| Communication interface | | RS232/RS485 | |
| Indicator state | | ALM/RUN/SOC | |
| Parallel communication | | Maximum support for 16 sets of parallel | |
| Terminal stud | | M6 | |
| Alarm and protection | | Over voltage, under voltage, short circuit, overload, over current, over temperature, low temperature protection, etc. | |
| 3. Working Condition | | | |
| Cooling mode | | Self-cooling | |
| Altitude | | ≤4000m | |
| Humidity | | 5%-95% | |
| Operating temperature | Charge | -5°C~+45°C | |
| | Discharge | -20°C~+50°C | |
| Recommended operating temperature | Charge | +15°C~+35°C | |
| | Discharge | +15°C~+35°C | |
| | Storage | +10°C~+35°C | |

Passion for Storage and Green Energy

SDA10-4850

Lithium-ion battery system for telecom



SDA10- 4850 series Constant Current Discharge Characteristics (25°C,77°F)

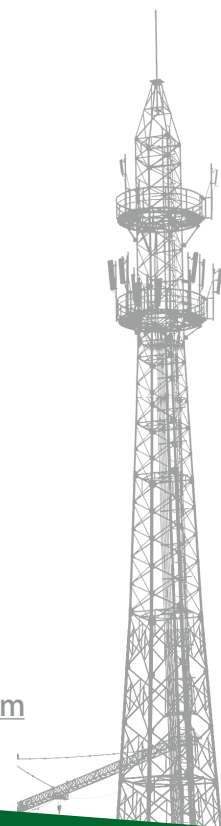
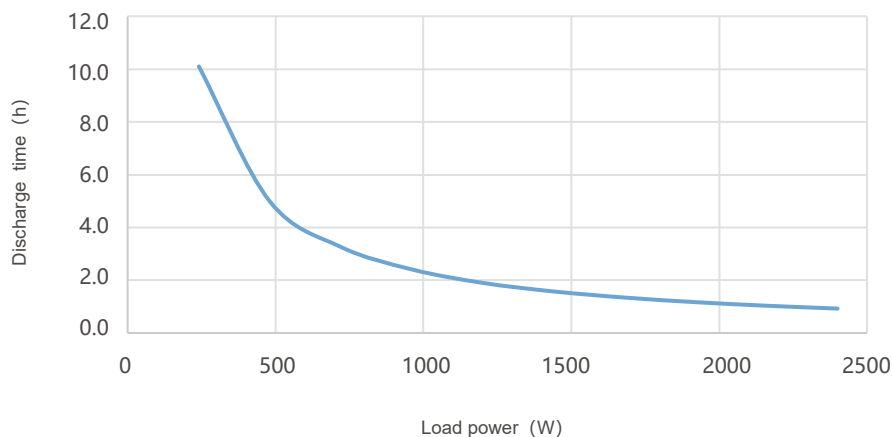
| Voltage | Current/A | | | | | | | | | |
|---------|-----------|------|------|------|------|------|------|------|------|------|
| | 0.1C | 0.2C | 0.3C | 0.4C | 0.5C | 0.6C | 0.7C | 0.8C | 0.9C | 1C |
| 46.5V | 9.55 | 4.7 | 3.04 | 2.2 | 1.67 | 1.33 | 1.06 | 0.87 | 0.69 | 0.54 |
| 45.0V | 9.89 | 4.87 | 3.19 | 2.34 | 1.82 | 1.49 | 1.24 | 1.03 | 0.87 | 0.72 |
| 43.5V | 10.12 | 4.97 | 3.27 | 2.42 | 1.9 | 1.55 | 1.3 | 1.13 | 0.99 | 0.87 |
| 42.0V | 10.3 | 5.1 | 3.34 | 2.47 | 1.95 | 1.62 | 1.36 | 1.18 | 1.03 | 0.92 |
| 40.0V | 10.5 | 5.2 | 3.41 | 2.54 | 2 | 1.65 | 1.4 | 1.22 | 1.07 | 0.95 |

SDA10-4850 Constant Power Discharge Characteristics (25°C,77°F)

| Voltage | Power/W | | | | | | | | | |
|---------|---------|------|------|------|------|------|------|------|------|------|
| | 240 | 480 | 720 | 960 | 1200 | 1440 | 1680 | 1920 | 2160 | 2400 |
| 46.5V | 9.54 | 4.69 | 3.02 | 2.18 | 1.65 | 1.32 | 1.05 | 0.86 | 0.68 | 0.53 |
| 45.0V | 9.88 | 4.85 | 3.17 | 2.32 | 1.8 | 1.47 | 1.22 | 1.01 | 0.85 | 0.7 |
| 43.5V | 10.1 | 4.95 | 3.24 | 2.41 | 1.89 | 1.53 | 1.28 | 1.11 | 0.98 | 0.86 |
| 42.0V | 10.28 | 5.1 | 3.33 | 2.43 | 1.92 | 1.58 | 1.31 | 1.15 | 1.01 | 0.9 |
| 40.0V | 10.35 | 5.15 | 3.37 | 2.44 | 1.95 | 1.6 | 1.35 | 1.18 | 1.04 | 0.92 |

Discharge Curves

SDA10-4850 Discharge time at different load power



Declaration: This information is generally descriptive only and is not intended to make or imply any representation, guarantee or warranty with respect to any cells and batteries. Cell and battery designs/specifications are subject to modification without notice. Contact CHINASHOTO for the latest information.

Welcome to Visit: www.chinashoto.com